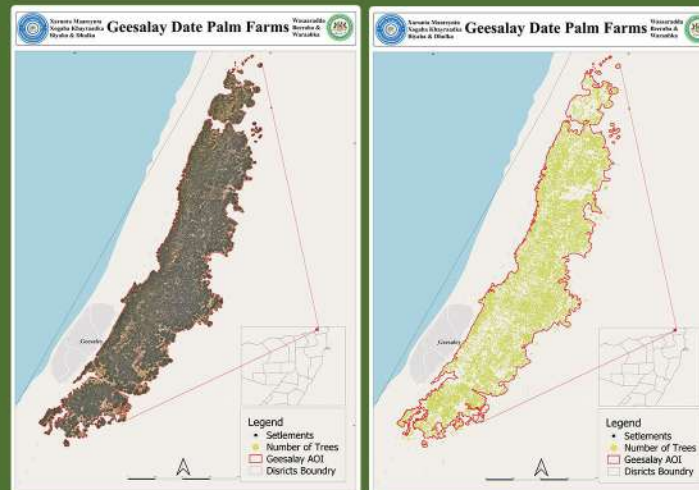


## Largest East Africa Date Palm Farm Geesaley



Historic Geesaley Farm Total trees counted 63,244 With total area 439.2 Ha



## PUNTLAND DATE PALM MAPPING STUDY REPORT 2025

Somalia: East Africa's Prime Date Palm Production Destination

## Background

Puntland State situated in northeastern of Somalia, and has an arid to semi-arid climate with limited but seasonally variable rainfall. Date palm is a key crop in Somalia, and majorly grows in Puntland territory, with 347 thousand date palm trees, and yearly production of 12 thousand tons, well-adapted to these dry conditions. Cultivation is concentrated in areas with access to groundwater and seasonal rivers, supporting irrigation systems. Date palms contribute to food security, income generation, and environmental sustainability, including soil stabilization. Despite reliance on traditional knowledge for farm management, modern practices such as standardized spacing, irrigation system, and pest control are not yet widely adopted. Farmers also face challenges including water scarcity, poor agriculture practice, pest diseases, limited access to quality seedlings, and investments.

**Intended message:** seeking your support in date palm knowledge, skills and investments



Puntland Information Management center for Water and Land resource



## Contacts

Ministry of Agriculture and Irrigation  
Garowe - Puntland  
Email: [info@moai.pl.so](mailto:info@moai.pl.so)  
Website: [moai.pl.so](http://moai.pl.so)

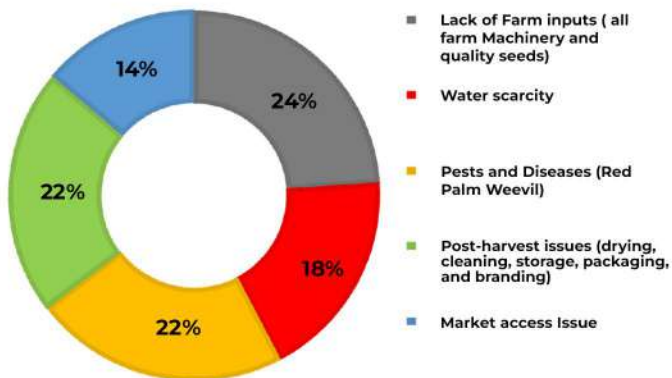
## KEY OBJECTIVES

- Map the spatial distribution and coverage of date palm farms
- Assess cultivation status, farm counts, and total trees
- Identify production challenges
- Recommend strategies for policy and value-chain improvement

## METHODOLOGY



## FIELD SURVEY RESULTS



# Key Findings



## Main Production & Productivity Challenges

- Lack of farm inputs
- Water scarcity
- Poor irrigation management
- Pests & Diseases
- Post-harvest issues (drying, cleaning, storage, packaging, and branding)
- Poor market access (Infrastructure)
- Poor agriculture practices
- lack of Nurseries and propagation facilities (Tissue culture Labs)
- Lack of investments

### IRRIGATION METHODS



### AVERAGE YIELD PER TREE



### TRAINING STATUS



### DATE PALM TYPES



## Opportunities

- Favorable agro-climatic conditions
- High local and regional market demand
- Strong profitability for farmers and investors
- Good governance, peace and stability
- Farmers with high demand and interest for date palm cultivation
- Job creation along the value chain
- Potential arable land
- Private investment and PPPs
- Potential for export to East African markets and beyond

## Major Date palm varieties

- Medjool
- Ajwa
- Khalas
- Sukkari
- Barhi
- Sultana

