



SOMALIA FOOD SYSTEMS RESILIENCE PROJECT (FSRP)

ENVIRONMENTAL AND SOCIAL MANAGEMENT PLAN (ESMP)

Activity Title:

Construction and Operationalization of a Modern Livestock Market in Galdogob, Puntland

For:

Food Systems Resilience Project (FSRP) – Puntland Component

Date: February 2026

Project Coordinates:

7°02'07.6"N, Longitude 47°01'03.6"E.

Table of Contents

Executive Summary 6

2. INTRODUCTION..... 8

 2.1 Project Overview 8

 2.2 Purpose of the Environmental and Social Management Plan (ESMP) 10

 2.3 Scope of the ESMP 10

 2.4 Methodology..... 12

 2.5. Sub project description 13

 2.6 Sub Project Alternative(s) 15

 2.6.1 Alternative 1: No-Project Scenario..... 16

 2.6.2 Alternative 2: Alternative Site Locations 16

 2.6.3 Alternative 3: Infrastructure and Facility Layout Options 17

 2.6.4 Alternative 4: Technology and Utility System Alternatives 18

 2.6.5 Alternative 5: Construction Method Alternatives 19

 2.6.6 Summary of the Preferred Alternative 19

3. POLICY, LEGAL, AND INSTITUTIONAL FRAMEWORK 20

 3.1 National Policy and Legal Framework 20

 3.2 Institutional Framework 21

 3.3 World Bank Environmental and Social Framework (ESF) 22

 3.4 International Conventions and Guidelines 22

 3.5 Compliance Summary..... 23

4. BASELINE ENVIRONMENTAL AND SOCIAL CONDITIONS 23

 4.1 Physical Environment 23

 4.1.1 Location and Geography 23

 4.1.2 Climate and Meteorology 24

 4.1.3 Soils and Geology 25

 4.1.4 Hydrology and Water Resources..... 25

 4.1.5 Air Quality and Noise Levels..... 25

 4.2 Biological Environment 25

 4.2.1 Vegetation and Flora 25

4.2.2 Fauna and Wildlife	25
4.3 Socioeconomic Environment	26
4.3.1 Demographic Characteristics.....	26
4.3.2 Land Tenure and Ownership	26
4.3.3 Livelihoods and Economic Activities.....	26
4.3.4 Infrastructure and Public Services.....	26
4.3.5 Social Services and Institutions	26
4.3.6 Gender and Vulnerable Groups	27
4.3.7 Community Perceptions	27
4.4 Environmental Sensitivities	27
5. ANTICIPATED ENVIRONMENTAL AND SOCIAL IMPACTS	28
5.1 Positive Impacts.....	28
5.2 Negative Environmental Impacts	29
6. ENVIRONMENTAL AND SOCIAL MANAGEMENT PLAN (ESMP)	31
6.1 Objectives of the Environmental and Social Management Plan (ESMP).....	31
Table 6.1: Environmental and Social Mitigation Plan	32
6.2 Capacity Building Plan	35
6.3 ESMP Implementation Budget.....	37
6.4 Implementation Arrangements.....	38
6.5 Grievance Mechanism (GM).....	40
7. Summary of Public Consultation and Participation	41
7.1 Objectives of the Consultation	41
7.2 Summary of Consultation Process.....	41
7.3. Stakeholders consulted.....	42
7.4 Consultation Outcomes	43
7.5 Stakeholder Engagement Recommendations	43
8. Conclusion.....	44
9. Annexes	45
9.1. Designs/ Layout Drawings	45

9.2. Land ownership documents	48
9.3. Stakeholder Consultation meetings' participant lists	49
9.4 ES Screening Checklist	50
9.5. Photos for Consultation Meetings	50
9.6. Site Observation Photos.....	53
Table 1: Institutional framework.....	21
Table 2: WB ESS.....	22
Table 3: Negative Environmental Impacts	29
Table 4: Negative Social Impacts	30
Table 5: Environmental and Social Mitigation Plan.....	32
Table 6: Capacity Building and Training Plan	36
Table 7: Stakeholders consulted	42
Figure 1: Site map	24

LIST OF ABBREVIATIONS

Abbreviation	Full Meaning
BoQ	Bill of Quantities
CBD	Convention on Biological Diversity
C-ESMP	Contractor's Environmental and Social Management Plan
E&S	Environmental and Social
CoC	Code of Conduct
COVID-19	Coronavirus Disease 2019
CRC	Community Resilience Committee
CBO	Community Based Organization
DECC	Department of Environment, Climate Change
DGM	Deputy General Manager
DHS	Directorate of Health Services
DRM	Disaster Risk Management
EA	Environmental Assessment
EIA	Environmental Impact Assessment
EHS	Environment, Health and Safety
EMF	Environmental Management Framework
EMMP	Environmental Monitoring and Mitigation Plan
ESF	Environmental and Social Framework
ESIA	Environmental and Social Impact Assessment
ESMP	Environmental and Social Management Plan
ESMS	Environmental and Social Management System
ESS	Environmental and Social Standard
FGS	Federal Government of Somalia
FSRP	Food Systems Resilience Project
GBV	Gender-Based Violence
GDP	Gross Domestic Product
GD-1	Land Ownership Certificate (Reference Code)
GIS	Geographic Information System
GoP	Government of Puntland
GPS	Global Positioning System
GM	Grievance Mechanism
ILO	International Labour Organization
KAALO	KAALO Aid & Development
LMP	Labour Management Procedures
MoCII	Ministry of Commerce, Industry and Investment
MoLAH	Ministry of Livestock and Animal Husbandry
MoERCC	Ministry of Environment, Range and Climate Change
NPCU	National Project Coordination Unit
OHS	Occupational Health and Safety

Executive Summary

*The Environmental and Social Management Plan (ESMP) for the Modern Livestock Market in Galdogob was developed under the Somalia Food Systems Resilience Project (S-FSRP), financed by the World Bank and implemented by the Ministry of Livestock and Animal Husbandry (MoLAH) in collaboration with the Ministry of Environment, Range and Climate Change (MoERCC) and the Galdogob Municipality. The project aims to establish a modern, climate-resilient livestock market that improves trade efficiency, hygiene, and animal health standards while creating economic opportunities and strengthening community resilience to climate shocks. The site, covering 15,000 m² of public land, is located about one kilometer southeast of Galdogob town center and was officially allocated by the municipality, (see **Annex 9.1: Municipal Site Allocation Letter and Land Ownership Certificate Ref. GD-1**).*

The project includes construction of a perimeter wall, livestock holding sheds with feeding troughs, veterinary inspection offices, administrative buildings, public toilets, a 50 m³ elevated tank, 90 m³ ground reservoir, and solarized pumping systems. Landscaping and tree planting will reduce dust and enhance environmental conditions.

The ESMP identifies, assesses, and manages environmental and social risks in compliance with the World Bank Environmental and Social Framework (ESF) and the Puntland Environmental Impact Assessment Act (2023). Field assessments, stakeholder consultations, and document reviews were conducted to guide the process. The project is classified as Moderate Risk (Category B), as its impacts are localized, predictable, and manageable through standard mitigation measures.

The ESMP aligns with national legislation, including the EIA Act (2023), Water Act (2022), Urban Planning Policy (2021), and the Somalia Labor Code (1972). Implementation involves MoLAH, MoERCC, Galdogob Municipality, PCU safeguards team., and the FSRP Project Coordination Unit (PCU).

Main risks: *During construction, key risks include dust/noise, soil disturbance and erosion, poor waste and hazardous material handling, worker OHS incidents (injury, heat stress, electrical hazards), community safety risks (traffic and site access), and labor/SEA/SH risks. During operation, main risks include poor manure/solid waste/wastewater management (odors, vectors, contamination), zoonotic disease and weak biosecurity, water shortages/inefficiency, user and worker safety risks (animal handling, slips/trips, overcrowding and traffic flow), fire/electrical hazards, and unresolved grievances that can damage trust and reputation.*

Mitigation approach: *Control dust and noise through water spraying, covered trucks, speed limits, and daytime scheduling; protect soils via limiting disturbance, drainage/sediment controls, restoration and tree planting; manage waste through segregation, licensed disposal, no dumping/burning, banded storage and spill response; maintain hygiene with routine cleaning,*

manure containment, proper drainage and sanitation; strengthen OHS with PPE, training, first aid, incident reporting, heat-stress measures and electrical safety; protect communities via fencing, access control, traffic management and awareness; reduce labor/SEA/SH risks through fair conditions, local hiring, codes of conduct, training and confidential survivor-centered reporting; reduce animal health risks through veterinary inspection, isolation and disinfection; improve water reliability through conservation and maintenance; and ensure emergency readiness with extinguishers, safe wiring, signage, training and drills.

Galdogob has a semi-arid climate with low rainfall (200–300 mm/year) and high temperatures averaging 27–33°C. The site is flat, sparsely vegetated, and free of settlements or sensitive habitats. The local population, estimated at 70,000–80,000, depends mainly on livestock production and trade. The land is confirmed public property with no ownership disputes.

Expected benefits include improved livestock trade efficiency, enhanced hygiene and veterinary standards, employment creation, gender inclusion, and reduced emissions through solar power. Potential adverse impacts include dust, noise, waste generation, OHS risks, and minor vegetation loss, all of which are temporary and reversible. The total ESMP implementation cost is estimated at USD 20,900, covering mitigation, monitoring, and capacity building.

Community consultations confirmed strong support for the project. Participants emphasized the need for local labor recruitment, women’s participation, dust control, and proper waste management. A Grievance Mechanism (GM)—linked to the FSRP toll-free hotline (3060)—ensures accessible and transparent handling of complaints.

In conclusion, the project poses moderate, site-specific, and manageable risks. With the implementation of recommended mitigation measures and continuous stakeholder engagement, the Galdogob Modern Livestock Market will comply with World Bank ESSs and Puntland environmental regulations, contributing to sustainable and climate-resilient livestock market development in the region.

2. INTRODUCTION

2.1 Project Overview

The Somalia Food Systems Resilience Project (S-FSRP) is a multi-sectoral investment program jointly implemented by the Federal Government of Somalia (FGS) and the Federal Member States with financing from the World Bank. Its overall goal is to strengthen the resilience of food production systems and rural livelihoods against climatic and economic shocks through improved infrastructure, sustainable natural resource management, and institutional capacity building.

Under Component 2 – Resilient Market and Value-Chain Infrastructure, the Puntland State of Somalia is investing in the development of modern, climate-resilient livestock markets to improve the efficiency, hygiene, and profitability of the livestock sector. Within this framework, the Ministry of Livestock and Animal Husbandry (MoLAH) and the Ministry of Environment, Range and Climate Change (MoERCC) are undertaking the construction of a Modern Livestock Market in Galdogob District. The subproject is one of the priority investments identified through the Puntland FSRP Project Coordination Unit (PCU) to promote safe animal trade, disease control, and value-addition in livestock products.

The proposed Galdogob Modern Livestock Market will serve as a regional livestock trading hub linking pastoral producers from Mudug and neighboring regions to domestic and export markets. It will provide well-planned facilities for animal holding, veterinary inspection, certification, and slaughtering, thereby improving food safety, animal welfare, and revenue collection for local authorities. District-level livestock census data are limited in the public domain; therefore, this ESMP presents planning estimates to inform market sizing, veterinary inspection capacity, water and sanitation demand, waste loads, and mitigation measures (traffic management, animal welfare, and biosecurity). The Galdogob Modern Livestock Market is expected to serve pastoral and agro-pastoral communities in Galdogob District and nearby grazing and trade corridors. The catchment is typically dominated by small ruminants (goats and sheep), followed by camels, with comparatively low cattle presence.

For planning purposes, the broader market catchment is conservatively assumed to represent a small share of the wider regional livestock base, resulting in indicative ranges of:

- Shoats (goats & sheep): approximately 150,000–440,000 head
- Camels: approximately 22,000–66,000 head
- Cattle: approximately 650–2,000 head

These values are indicative only and are intended to support design and operational planning rather than serve as official census figures. The estimates will be validated and refined during

detailed design and early operations using Ministry of Livestock administrative records, animal movement data, and routine veterinary inspection and market-day transaction registers, taking into account seasonal mobility and drought-driven changes in livestock movements.

The market will occupy a 15,000 m² plot (150 m × 100 m) of public land officially allocated by the Galdogob Local Government for this purpose. The site lies about 1 km southeast of Galdogob town center, accessible via a graded gravel road that connects to the main Bosaso–Galdogob highway. The terrain is flat and sandy with scattered shrubs, no permanent watercourses, and no environmentally sensitive habitats.

The main physical components of the market include:

- Perimeter boundary wall with access gates for controlled entry and security.
- Four livestock holding sheds (12 m × 32 m each) fitted with feeding and watering troughs.
- Certification and veterinary inspection block for animal health control and trade documentation.
- 50 m³ elevated water tank and 90 m³ ground storage tank, connected to the municipal water network.
- Internal drainage and paved surfaces to manage runoff and maintain hygiene.
- Administrative and staff offices, public latrines, and a cafeteria for traders.
- Solarized water-pumping system and electrical connections for lighting and basic operations; and
- Landscaping and tree planting to reduce dust and enhance site aesthetics.

Once completed, the market will be jointly managed by MoLAH and the Galdogob Municipality, with MoERCC providing environmental compliance oversight and PCU safeguards team serving as the safeguards supervision. The project is expected to:

- Improve livestock marketing efficiency and traceability.
- Enhance hygiene and disease-control standards.
- Create local employment and income opportunities; and
- Contribute to climate-resilient and sustainable livestock value-chains in Puntland.

2.2 Purpose of the Environmental and Social Management Plan (ESMP)

The purpose of this Environmental and Social Management Plan (ESMP) is to provide a structured framework for identifying, assessing, and managing the environmental and social risks associated with the construction and operation of the Modern Livestock Market in Galdogob under the Somalia Food Systems Resilience Project (S-FSRP).

The ESMP ensures that all project activities are implemented in compliance with the World Bank Environmental and Social Framework (ESF) and the Puntland Environmental Impact Assessment Act (2023). It also serves as a practical tool to integrate environmental and social safeguards into project planning, design, construction, and operational management processes.

Specifically, this ESMP aims to:

1. Identify and assess potential environmental and social impacts resulting from project implementation activities, including site preparation, construction, and operation.
2. Establish appropriate mitigation and enhancement measures to minimize or eliminate adverse impacts while optimizing positive project outcomes.
3. Define institutional roles and responsibilities for environmental and social management at all levels—from the contractor to the supervising consultant, the Ministry of Livestock and Animal Husbandry (MoLAH), the Ministry of Environment, Range and Climate Change (MoERCC), and the FSRP PCU.
4. Provide a monitoring framework to ensure compliance with safeguard requirements, including measurable indicators, frequency of inspections, and reporting mechanisms.
5. Promote occupational health and safety (OHS) and community well-being by enforcing safety procedures, providing personal protective equipment (PPE), and conducting awareness training for workers and nearby communities.
6. Enhance capacity-building and institutional sustainability through training, awareness creation, and continuous improvement in environmental and social performance.

Overall, the ESMP is designed as both a compliance and management instrument that supports decision-making, risk mitigation, and accountability throughout the project cycle. It will ensure that the Galdogob Modern Livestock Market is constructed and operated in an environmentally sound, socially inclusive, and economically sustainable manner.

2.3 Scope of the ESMP

The scope of this Environmental and Social Management Plan (ESMP) covers all phases of the Galdogob Modern Livestock Market subproject—from site preparation and construction through

to operation and maintenance. It serves as a guiding framework to ensure that all project activities are planned, implemented, and monitored in a manner that minimizes environmental and social risks while enhancing project benefits.

This ESMP addresses the full spectrum of environmental and social dimensions relevant to the project, including physical, biological, occupational, and community aspects. It also integrates the requirements of the Puntland Environmental Impact Assessment Act (2023) and the World Bank Environmental and Social Standards (ESS1–ESS10) into project implementation.

The plan specifically applies to:

- Pre-construction activities: Land confirmation, community consultations, verification of voluntary land donation (VLD), and inclusion of environmental and social clauses in bidding and contract documents.
- Construction phase: Site clearing, excavation, materials handling, structure erection, water and power installation, and site restoration.
- Operation phase: Market management, livestock handling, waste management, sanitation, and facility maintenance.

Within these phases, the ESMP defines:

1. Potential environmental and social impacts — covering air quality, noise, water use, soil stability, biodiversity, OHS, labor relations, and community health and safety.
2. Mitigation measures — specifying actions, responsibilities, and timelines to manage each identified impact.
3. Monitoring and reporting mechanisms — including performance indicators, inspection schedules, and reporting formats.
4. Institutional arrangements — detailing the roles of MoLAH, MoERCC, the contractor, Galdogob Municipality, and PCU safeguards team in implementing and supervising mitigation measures.
5. Capacity building and training requirements — aimed at strengthening environmental and social management capabilities among stakeholders.
6. Budget estimates — for implementing mitigation, monitoring, and training activities throughout the project lifecycle.

2.4 Methodology

Preparation of this ESMP followed a structured and evidence-based process consistent with the S-FSRP Environmental and Social Management Framework (ESMF), the World Bank ESF, and the Puntland EIA Act (2023). The methodology included:

a. Field Observations and Site Assessment

The assessment team from PCU safeguards team, in collaboration with MoLAH and Galdogob Municipality, visited the proposed site on **30 October 2025** to:

- Verify land ownership and boundaries.
- Document baseline environmental and social conditions.
- Identify potential receptors and environmental sensitivities.
- Conduct photographic documentation and GPS mapping (7°02'07.6" N, 47°01'03.6" E).

b. Data Collection and Community Consultations: A structured Environmental and Social Data Collection Checklist was used to record physical, ecological, and social features. Consultations were conducted with the Mayor and Municipal Council, MoLAH regional staff, and community representatives (including women livestock vendors and traders). Participants expressed strong support for the project and emphasized local employment, fairness, and gender inclusion.

c. Desktop Review

A review of relevant documents was conducted, including:

- S-FSRP ESMF and screening templates.
- Puntland environmental and labor legislation.
- Project design layouts and technical specifications.
- Landownership and municipal approvals.

d. Risk Screening and Analysis

The ESMP applied the S-FSRP screening tool to categorize potential risks. The subproject was classified as Moderate Risk (Category B) due to its manageable, site-specific, and reversible impacts.

e. Reporting and Validation:

Findings were validated through coordination meetings with MoLAH and the Municipality, ensuring alignment between technical design, safeguards compliance, and community priorities.

2.5. Sub project description

The proposed **Modern Livestock Market in Galdogob** aims to establish a well-organized, hygienic, and climate-resilient livestock trading facility to support animal health services, certification, and market efficiency. The project will occupy a **150 m × 100 m** fenced area and provide essential infrastructure for livestock management and welfare.

Key project components include:

- **Perimeter Wall (150 m × 100 m):** To secure the market premises and control access.
- **Four Livestock Holding Sheds (12 m × 32 m each):** Equipped with feeding and watering troughs to accommodate animals in an orderly and hygienic manner.
- **Certification Offices:** To facilitate veterinary inspection, health certification, and administrative operations.
- **50 m³ Elevated Water Tank and 90 m³ Ground Tank:** To ensure reliable water supply for animal use, cleaning, and sanitation.
- **Water System Connection:** Linking storage tanks to troughs, washing bays, and sanitary facilities for efficient water distribution.
- **Land Development and Plantation:** Site leveling, surface drainage, and planting of trees and grasses to control erosion, reduce dust, and enhance the visual appearance of the facility.

Galdogob Modern Livestock Market – Workforce Composition

The construction and initial operation of the Galdogob Modern Livestock Market will engage an estimated **60 workers** during peak periods. The workforce composition is as follows:

- **Total workers:** 60
- **Skilled workers:** 22
- **Unskilled workers:** 35
- **Engineers and site management team:** 3

In terms of origin:

- **Local community workers:** 18 (mainly unskilled and semi-skilled labor)
- **Workers from outside the project area:** 3 (engineers and site management staff only)

The project will **prioritize recruitment from the local community** to minimize labor influx and associated social risks, including OHS and SEA/SH risks, in accordance with **World Bank ESS2 and ESS10**.

2.5.1 Detailed Technical Design Features

The market layout is designed to ensure safe, efficient, and controlled movement of animals, vehicles, and people within the facility. Internal circulation routes are clearly defined to minimize congestion and reduce animal stress. Dedicated livestock corridors connect entry gates to holding sheds, while a vehicle circulation loop is designed for loading and offloading trucks without interfering with pedestrian or livestock movement. The layout also provides clear segregation between livestock holding areas, veterinary inspection zones, trading spaces, administrative offices, and waste management areas. Quarantine or isolation pens are physically separated from main sheds to reduce disease transmission risks, and waste handling areas are located downwind of trading zones to minimize odor and public health impacts.

The water supply system will be sourced from a reliable municipal water connection, supported by a ground storage tank and a 50 m³ elevated steel tank to ensure uninterrupted supply for animal watering, cleaning, veterinary services, and sanitation. The site includes a graded surface drainage system to channel stormwater and wash water toward designated outlets, preventing stagnation and maintaining hygienic conditions.

The facility will be connected to the city electrical grid to meet operational power requirements, including lighting. Solarization may be considered in the future subject to budget availability. All structures will comply with Puntland building regulations and relevant international standards for public market facilities, ensuring structural stability, wind resistance, and the use of durable materials suitable for the local climate.

2.5.2 Climate-Resilience and Environmental Design Features

The project design integrates climate-resilient features to enhance durability and environmental performance under local climatic conditions. Heat-resistant roofing sheets are incorporated to reduce internal shed temperatures, while open-sided shed structures allow natural cross-ventilation to improve airflow and animal comfort. The elevated water tank is structurally designed to withstand high wind conditions, and windbreak plantations consisting of trees along the perimeter fencing are included to reduce dust, protect against strong winds, and improve the site microclimate.

In terms of environmental sustainability, the facility will utilize water-efficient taps and flow-control valves to minimize water wastage. Tree planting around the market area will further support dust reduction, erosion control, and overall environmental enhancement while contributing to improved thermal comfort within the site.

2.5.3 Operational Layout and Market Management Design

The market will be organized into clearly defined operational zones to ensure efficiency, hygiene, and disease control. Holding areas will be separated by animal type (such as cattle, goats, and camels where applicable), with dedicated quarantine or isolation pens for sick or suspected animals to prevent disease transmission. Designated trading platforms and properly designed loading and offloading bays will facilitate safe truck maneuverability and efficient livestock handling. The

veterinary inspection workflow will follow a structured sequence of Entry → Holding → Inspection → Certification → Trading → Exit to maintain orderly operations and compliance with animal health requirements.

Sanitation and waste management facilities are integrated into the design to maintain environmental and public health standards. Animal waste will be managed through dedicated manure collection pits with appropriate storage capacity, supported by a regular waste removal plan under market management. Solid waste collection stations will be distributed across the site, with a temporary storage area established prior to municipal disposal. Public sanitation facilities will include gender-segregated latrines and handwashing stations with water and soap, supported by drainage systems designed to prevent stagnant water accumulation.

2.5.4 Social Infrastructure & Inclusion Features

The project incorporates social infrastructure and inclusion measures to ensure safety, accessibility, and equitable participation. Separate sanitation facilities will be provided for women and men, and the site will include perimeter security and controlled access to enhance user safety. Accessibility considerations include ramps where necessary to support universal access and shaded public waiting areas for elderly persons and other vulnerable groups.

During operation, the market is expected to generate employment opportunities including market management staff, veterinary support staff, security personnel, cleaners, maintenance workers, casual labor during peak market days, and traders. The stall allocation system will promote transparency and inclusiveness, including opportunities for women livestock traders and vendors. Given that most meat sellers are women, the market is expected to create significant livelihood opportunities particularly benefiting women.

2.5.5 Construction Approach & Technology

The construction methodology will follow a phased implementation approach, beginning with site preparation and leveling, followed by foundation and structural works, installation of water and utility systems, shed erection and roofing, drainage and landscaping works, and solar system installation where applicable. The contractor will apply environmentally responsible construction practices in line with ESMP requirements, including proper waste management, dust control measures, occupational health and safety compliance, and community safety protections.

2.6 Sub Project Alternative(s)

A structured alternatives assessment was carried out to confirm that the proposed Modern Livestock Market in Galdogob is the most suitable option in terms of environmental sustainability, social benefits, technical practicality, and cost-effectiveness. The assessment considered: **(i)** the No-Project scenario, **(ii)** alternative site locations, **(iii)** infrastructure and layout options, **(iv)** technology and utility system options, and **(v)** construction method options. This process follows good international practice and the World Bank requirements for identifying

and selecting technically and financially feasible alternatives that avoid or reduce environmental and social risks.

2.6.1 Alternative 1: No-Project Scenario

Description

Under this option, the modern livestock market would not be constructed and livestock trading would continue through existing informal and largely unregulated arrangements.

Advantages

- Avoids construction-related impacts such as dust, noise, and minor vegetation clearing.
- Avoids temporary disruption to local movement and access during works.

Disadvantages

- Informal trading would continue in locations with poor hygiene, limited services, and weak organization.
- Missed livelihood and local economic opportunities for traders, women vendors, youth, and transporters.
- Persistent public health and animal health risks due to inadequate sanitation, weak waste control, and limited veterinary inspection and biosecurity measures.
- Missed opportunity to improve market resilience and strengthen livestock value-chain systems.
- Continued loss of potential municipal revenues from structured market operations.

Conclusion

The No-Project alternative is not preferred because it does not address current market inefficiencies, hygiene challenges, animal health risks, or livelihood needs in Galdogob.

2.6.2 Alternative 2: Alternative Site Locations

Description

Several potential sites within Galdogob District were screened at a preliminary level. The screening criteria included: land availability and ownership status, access to livestock transport routes, environmental sensitivity, availability of water and municipal services, and the likelihood of displacement or land acquisition implications.

Potential advantages of other sites

- Some sites may offer larger plots or greater buffer distance from residential areas.

Key disadvantages

- Some locations involved private land or active land use, creating risk of land acquisition, compensation requirements, or economic displacement.
- Certain sites lacked reliable access roads or were distant from the main livestock movement corridors used by traders and transporters.
- Some locations presented higher environmental risks due to denser vegetation or proximity to seasonal drainage features.

Conclusion

The selected site (150 m × 100 m, publicly owned and municipally allocated) is preferred because it avoids displacement risks, is well connected to livestock movement routes, has sparse vegetation and low environmental sensitivity, and is accessible through an existing gravel road.

2.6.3 Alternative 3: Infrastructure and Facility Layout Options

Option A: Basic Layout (Minimal Infrastructure)

This option would provide only essential structures such as sheds, a boundary wall, and basic water points.

Pros

- Lower upfront cost.
- Faster construction timeline.

Cons

- Limited hygiene and sanitation performance and higher operational health risks.
- Absence of effective drainage increases the risk of stagnant water, contamination, and nuisance conditions.
- Insufficient biosecurity provisions (e.g., no dedicated areas for inspection control) increases disease transmission risks.
- Weak climate resilience measures, increasing heat stress risks for animals and users.

Conclusion

Not preferred due to poor environmental and social performance and higher operational risks.

Option B: Optimized Functional Layout (Proposed Option)

This option includes: segregated holding zones, controlled circulation for animals/people/vehicles, a veterinary inspection block, reliable water supply (including solarized pumping where applicable), drainage and sanitation facilities, and designated waste handling areas.

Pros

- Improves hygiene, animal welfare, safety, and overall operational efficiency.
- Reduces congestion and conflicts through better internal circulation and separation of functions.

- Supports inclusion and user safety through improved lighting and appropriate sanitation arrangements.
- Better climate resilience and long-term sustainability.

Cons

- Higher initial capital cost compared with a minimal layout.

Conclusion

Preferred because it offers stronger safeguard performance, better operational outcomes, and reduced long-term environmental and public health risks.

2.6.4 Alternative 4: Technology and Utility System Alternatives

A. Water supply options

1. **Municipal water connection (preferred where feasible):** reliable, regulated, and operationally manageable.
2. **Borehole development:** higher cost and requires careful hydrogeological assessment and sustainable abstraction controls.
3. **Trucked water supply:** costly, unreliable, and not sustainable for routine market operations.

Conclusion: Municipal connection (supplemented by storage tanks) is preferred where feasible; boreholes are a secondary option only if supported by hydrogeological evidence and sustainable yield.

B. Energy options

1. **Grid electricity only:** may face reliability challenges and higher long-term operating costs.
2. **Solar-powered / hybrid system (preferred):** reduces operating costs and emissions and improves service reliability.
3. **Diesel generator only:** higher emissions, noise, fuel dependency, and increased OHS risks.

Conclusion: Solar/hybrid is preferred for cost, reliability, and sustainability.

C. Drainage options

1. **Open surface drains:** lower cost but present hygiene, safety, and maintenance concerns.
2. **Covered/controlled drainage (preferred where feasible):** safer and more hygienic, with reduced nuisance and contamination risks.

Conclusion: A controlled drainage solution is preferred to support hygiene and safe operations.

2.6.5 Alternative 5: Construction Method Alternatives

Option A: Traditional on-site construction (preferred)

- Maximizes local employment and skills development.
- Adaptable to site conditions and local material availability.
- Reduces specialized transport and logistics burdens.

Option B: Prefabricated structures

- Faster installation but typically higher cost.
- Requires specialized fabrication, transport, and skilled installation.

Option C: Mixed approach

- Prefabrication for selected units (e.g., office block) while using on-site methods for sheds, tanks, and civil works.

Conclusion

Traditional on-site construction is preferred due to local employment benefits, practicality for the proposed structures, and reduced logistical complexity.

2.6.6 Summary of the Preferred Alternative

The preferred alternative combines:

- A **publicly owned, municipally allocated site** that avoids displacement risks;
- An **optimized functional layout** that strengthens hygiene, animal welfare, safety, and market efficiency;
- **Sustainable utility solutions** (particularly solar/hybrid energy and reliable water storage) to reduce long-term costs and improve reliability; and
- **Traditional on-site construction** to maximize local employment and community benefits.

Overall, this option provides the most balanced and sustainable approach, meeting technical needs while reducing environmental and social risks and improving long-term operational performance.

3. POLICY, LEGAL, AND INSTITUTIONAL FRAMEWORK

This section outlines the policy, legal, and institutional framework governing environmental and social management for the Modern Livestock Market in Galdogob under the Somalia Food Systems Resilience Project (S-FSRP). It provides an overview of applicable national laws, regulations, policies, and the relevant international standards—particularly the World Bank Environmental and Social Framework (ESF)—that guide the preparation and implementation of this Environmental and Social Management Plan (ESMP).

The ESMP is designed to ensure that the project complies with both Puntland State’s environmental legislation and the World Bank’s Environmental and Social Standards (ESSs). It also promotes institutional coordination among the implementing ministries and local authorities involved in project execution.

3.1 National Policy and Legal Framework

a. The Puntland Environmental Impact Assessment Act (2023)

This is the principal legislation governing environmental assessment and management in Puntland. It mandates all development projects to undergo environmental and social screening, impact assessment, and approval by the **Ministry of Environment, Range and Climate Change (MoERCC)** prior to implementation. The Act also establishes procedures for environmental monitoring, public participation, and compliance enforcement. The ESMP for the Galdogob Market complies fully with the provisions of this Act, including requirements for mitigation, monitoring, and periodic reporting.

b. Somalia National Environmental Policy (2019)

This policy provides the overarching framework for sustainable environmental management across Somalia. It emphasizes rational resource use, biodiversity protection, pollution control, and integration of environmental considerations into all development programs. The policy calls for collaboration between government institutions, private sector actors, and local communities in addressing environmental degradation.

c. Puntland Waste Management Guidelines (2020)

These guidelines provide practical measures for managing solid and liquid waste, including segregation, collection, transportation, and disposal. They aim to reduce pollution, enhance recycling, and safeguard public health. The ESMP adopts these guidelines to ensure that waste generated from construction and market operations is managed in an environmentally sound manner.

e. Puntland Water Act (2022)

This Act regulates water extraction, supply, and quality control to ensure sustainable and equitable use of water resources. Given the installation of boreholes and water storage tanks under this project, compliance with the Water Act is mandatory to prevent overuse and contamination.

f. Puntland Urban Planning and Land Use Policy (2021)

The policy guides land allocation, zoning, and development planning within municipalities. It mandates environmental consideration and community participation in land-use decisions. The Galdogob market site was allocated in accordance with this policy, with documented municipal approval confirming the land’s public ownership and suitability for market infrastructure.

g. Somalia Labor Code (1972)

This code sets forth the legal framework for labor relations, including working hours, minimum wage, occupational safety, and non-discrimination. It prohibits forced labor and child labor and requires fair compensation for all employees. Contractors and service providers under this project must comply with the Labor Code and the World Bank’s ESS2 (Labor and Working Conditions).

3.2 Institutional Framework

The implementation of this ESMP involves several key institutions at the national, state, and local levels, each with specific mandates and roles:

Table 1: Institutional framework

Institution	Mandate / Role in the ESMP
Ministry of Livestock and Animal Husbandry (MoLAH)	Lead implementing agency responsible for supervising construction, ensuring ESMP implementation, and coordinating with contractors and municipalities.
Ministry of Environment, Range and Climate Change (MoERCC)	Regulatory authority responsible for environmental approvals, monitoring compliance, and conducting audits in line with the Puntland EIA Act (2023).
FSRP Project Coordination Unit (PCU)	Provides overall project oversight, ensures compliance with the World Bank’s ESF, consolidates monitoring reports, and finances safeguard activities.
Galdogob Municipality	Provides local oversight, ensures land-use compliance, facilitates waste management, and participates in grievance redress and community engagement.
Contractor	Implements site-level mitigation measures (after C-ESMP), ensures worker safety, manages waste, and reports environmental and social performance to MoLAH and PCU safeguards team

Community Committees (Elders, Women, Youth)	Participate in consultations, grievance management, and monitoring of community-level commitments, ensuring inclusivity and transparency.
--	---

3.3 World Bank Environmental and Social Framework (ESF)

The ESF establishes ten Environmental and Social Standards (ESSs) that collectively define the World Bank’s requirements for managing environmental and social risks in projects. The Galdogob Modern Livestock Market subject is guided by the following ESSs.

Table 2: WB ESS

ESS	Title	Relevance to This Project
ESS1	Assessment and Management of Environmental and Social Risks and Impacts	Core standard guiding the ESMP. Ensures all potential risks are identified, mitigated, and monitored throughout project implementation.
ESS2	Labor and Working Conditions	Applicable to contractor and labor management; includes OHS, non-discrimination, and prohibition of child labor.
ESS3	Resource Efficiency and Pollution Prevention and Management	Relevant to water use, waste management, and energy efficiency through solarization.
ESS4	Community Health and Safety	Addresses risks such as traffic safety, communicable diseases, and emergency preparedness.
ESS5	Land Acquisition, Restrictions on Land Use, and Involuntary Resettlement	Not applicable – the land is public and officially allocated with no displacement or restrictions.
ESS6	Biodiversity Conservation and Sustainable Management of Living Natural Resources	Relevant; promotes conservation of natural vegetation through landscaping and soil stabilization.
ESS8	Cultural Heritage	Applicable through the inclusion of chance-find procedures during excavation.
ESS10	Stakeholder Engagement and Information Disclosure	Strongly relevant; ensures ongoing community engagement, transparency, and Grievance Mechanisms.

3.4 International Conventions and Guidelines

Somalia is a signatory to several international conventions relevant to this project, including:

- **Paris Agreement on Climate Change (2015)** – commits Somalia to promoting climate-resilient development.

- **Basel Convention (1989)** – controls the transboundary movement and disposal of hazardous waste.
- **Convention on Biological Diversity (CBD, 1992)** – supports conservation and sustainable use of biological resources.
- **ILO Conventions on Occupational Safety and Health (1981)** – promotes worker protection and safety in all sectors.

3.5 Compliance Summary

The Galdogob Modern Livestock Market ESMP ensures compliance with the above national, institutional, and international frameworks. Through consistent application of the World Bank ESSs, Puntland EIA Act (2023), and related policies, the project will achieve environmentally sustainable, socially inclusive, and legally compliant implementation outcomes.

4. BASELINE ENVIRONMENTAL AND SOCIAL CONDITIONS

This section presents the existing environmental and social setting of the proposed Galdogob Modern Livestock Market site and its surrounding areas. Understanding baseline conditions is crucial for identifying potential impacts, designing appropriate mitigation measures, and ensuring that project implementation aligns with the local ecological and socioeconomic context. The baseline information was gathered through field observation, data collection checklists, community consultations, and secondary literature reviews.

4.1 Physical Environment

4.1.1 Location and Geography

The project site is located within Galdogob District, Mudug Region, Puntland State of Somalia, at approximate coordinates Latitude 7°02'07.6"N, Longitude 47°01'03.6"E. The area lies along the main Galdogob–Bosaso corridor, approximately 1 km southeast of the Galdogob town center. The proposed plot covers 15,000 m² (150 m × 100 m) of publicly owned land officially allocated by the Galdogob Municipality.

The site is generally flat and gently sloping, with a sandy-loam soil texture and low natural vegetation cover. Its topography makes it suitable for construction, drainage design, and future expansion of livestock-related infrastructure.

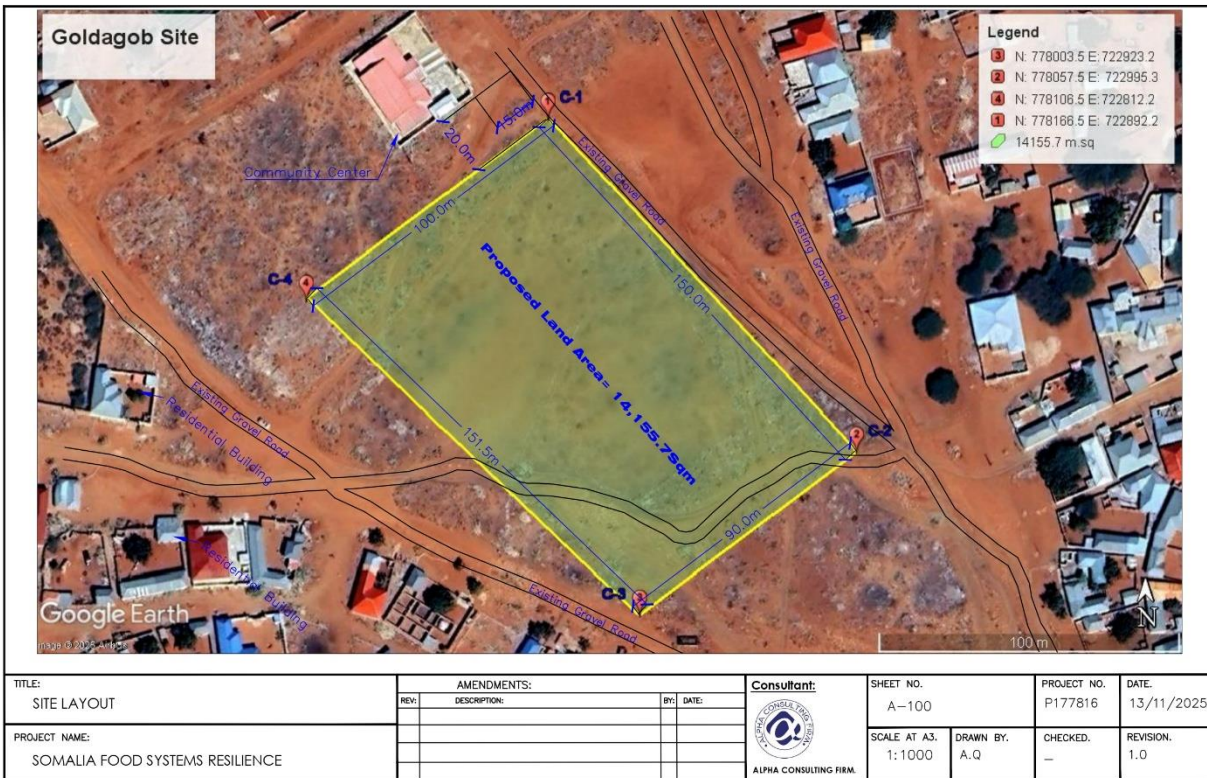


Figure 1: Site map

4.1.2 Climate and Meteorology

Galdogob experiences a semi-arid climate with high temperatures and low, erratic rainfall. The region has two rainy seasons—Gu (April–June) and Deyr (October–December)—and two dry seasons—Jilaal (January–March) and Hagaa (July–September).

- **Average annual rainfall:** 200–300 mm
- **Average annual temperature:** 27–33°C
- **Relative humidity:** 40–55% Strong winds and high evaporation rates are common, contributing to water scarcity and soil desiccation. Climate variability poses significant challenges to livestock productivity and water resource management, making climate-resilient infrastructure critical for sustainability.

4.1.3 Soils and Geology

The soils in Galdogob are predominantly red sandy loam derived from alluvial deposits. They are moderately drained but susceptible to erosion during heavy rainfall events. The soil bearing capacity is adequate for low-rise structures such as sheds, water tanks, and administrative blocks. No geotechnical or contamination issues were identified during site inspection.

4.1.4 Hydrology and Water Resources

The district has no permanent surface water bodies. Groundwater is the primary source of water for domestic, agricultural, and livestock use. The project will utilize water supplied through the Galdogob municipal network, which is fed by boreholes managed by local authorities. Water quality tests from nearby boreholes indicate slightly saline conditions typical of the region but within acceptable limits for livestock consumption.

4.1.5 Air Quality and Noise Levels

Current air quality in the project area is good due to limited industrial activity. Dust emissions mainly occur from unpaved roads and wind erosion. Noise levels are minimal, primarily from vehicle movement along nearby roads. These factors are expected to remain within acceptable thresholds during construction and operation with proper mitigation (e.g., dust suppression and equipment maintenance).

4.2 Biological Environment

4.2.1 Vegetation and Flora

The natural vegetation is sparse and dominated by **xerophytic shrubs and grasses** such as *Acacia tortilis*, *Commiphora africana*, and *Cenchrus ciliaris*. Vegetation is seasonal and highly influenced by rainfall variability. No rare, endangered, or protected plant species were observed during field inspection. The proposed site has minimal ecological value, and vegetation clearing will have negligible biodiversity impacts.

4.2.2 Fauna and Wildlife

The project area is not within or near any protected wildlife habitat. Common species in the wider Galdogob area include small mammals (e.g., hares and rodents), domestic animals, and occasional migratory birds. Livestock—including goats, sheep, and camels dominate the area, and the market development will support improved animal welfare and veterinary control.

4.3 Socioeconomic Environment

4.3.1 Demographic Characteristics

Galdogob District has an estimated population of **70,000–80,000 people** (2023 MoPIED estimates). The town serves as a commercial and administrative hub in Mudug region. The population is youthful, with a large proportion engaged in pastoralism, trade, and informal employment. Gender roles are distinct but complementary; men often handle livestock trading, while women are active in feed sales, small-scale milk trading, and food services.

4.3.2 Land Tenure and Ownership

The proposed site is public land under the jurisdiction of Galdogob Municipality, as confirmed by an official Land Ownership Certificate (Ref. GD-1). The allocation process followed local government procedures, and there are no encumbrances, disputes, or private claims associated with the land. Hence, ESS5 (Land Acquisition and Involuntary Resettlement) is not triggered.

4.3.3 Livelihoods and Economic Activities

Livestock production and trade form the backbone of Galdogob's economy. The town is a key transit point for livestock moving toward domestic and export markets in Bossaso and Ethiopia. Other livelihood sources include small-scale retail, transport services, and remittance-based income. The new livestock market will directly enhance income opportunities through employment, livestock sales, and ancillary services (feed supply, veterinary care, transport, and catering).

4.3.4 Infrastructure and Public Services

Galdogob has access to basic public infrastructure including roads, electricity, and telecommunication networks. The site is approximately 200 meters from the main access road and connected to the city electricity grid and water supply system. Public services such as schools, mosques, and health centers are within 1 km of the site. Waste collection services are available but limited, necessitating on-site waste management systems as part of this project.

4.3.5 Social Services and Institutions

The town has several community-based organizations, including women's groups and youth associations that play a role in local development and awareness campaigns. Traditional leadership (elders and religious leaders) remains influential in community decision-making. These institutions are important for ensuring inclusive participation and local support for the market's construction and operation.

4.3.6 Gender and Vulnerable Groups

Women in Galdogob are increasingly engaged in the livestock value chain, particularly in retailing, feed preparation, and food vending. However, they face challenges such as limited access to capital and decision-making platforms. Vulnerable groups (e.g., youth, IDPs, and female-headed households) were represented during consultations, and the ESMP integrates gender-sensitive measures—such as inclusive hiring and GBV awareness programs—to promote equitable benefits.

4.3.7 Community Perceptions

Consultations revealed broad community support for the project. Stakeholders emphasized the market’s role in improving hygiene, ensuring animal health, creating employment, and generating municipal revenue. Community members also requested that local labor be prioritized, construction waste be properly managed, and awareness be conducted on safety and sanitation.

4.4 Environmental Sensitivities

The site is not located within or near any sensitive environmental area such as wetlands, floodplains, or forests. No cultural or archaeological resources were identified. However, the ESMP includes chance-find procedures to address any unanticipated discoveries during excavation.

The main environmental sensitivities identified are:

- Wind-blown dust during dry seasons.
- Limited vegetation cover leading to potential soil erosion.
- Water scarcity during prolonged dry periods; and
- Potential waste accumulation if not properly managed.

These sensitivities are moderate and can be effectively mitigated through the proposed environmental and social management measures outlined in subsequent sections.

5. ANTICIPATED ENVIRONMENTAL AND SOCIAL IMPACTS

This section presents the potential positive and negative environmental and social impacts likely to arise during the pre-construction, construction, and operational phases of the Modern Livestock Market in Galdogob. The assessment considers the nature, magnitude, duration, and reversibility of each impact and classifies them as positive or negative, direct or indirect, and short-term or long-term.

Overall, the project is classified as Moderate Risk under the World Bank Environmental and Social Framework (ESF) because its impacts are site-specific, predictable, and manageable through well-established mitigation measures.

5.1 Positive Impacts

The Galdogob Modern Livestock Market is expected to generate significant social, economic, and environmental benefits both during construction and operation. Key anticipated positive impacts include:

a. Improved Livestock Marketing and Value Chain Efficiency

The project will establish a well-planned, climate-resilient livestock market with holding pens, veterinary services, and certification facilities. This will enhance the efficiency, hygiene, and traceability of livestock trade, benefiting pastoralists, traders, and exporters.

b. Employment and Income Generation

The construction phase will create short-term employment for local workers, including unskilled and semi-skilled labor. During operation, permanent jobs will be created for market managers, veterinarians, security guards, cleaners, and traders. Ancillary businesses such as fodder sales, transport, and food services will also grow.

c. Institutional Strengthening and Capacity Building

The project will strengthen the institutional capacity of MoLAH, Galdogob Municipality, and MoERCC through training on safeguards compliance, occupational health and safety, and market management. The experience gained will enhance the long-term sustainability of livestock infrastructure projects across Puntland.

d. Enhanced Public Health and Sanitation

Provision of water supply, drainage, and waste management systems will improve hygiene within the market and reduce the spread of zoonotic and waterborne diseases. This will contribute to improved public health outcomes for workers, traders, and consumers.

e. Promotion of Gender Inclusion and Economic Empowerment

The project will provide opportunities for women to engage in value-added activities such as milk sales, food vending, and feed trading. The ESMP includes measures to promote gender equity, GBV/SEA prevention, and women’s participation in market management.

f. Environmental Improvement and Climate Resilience

Vegetation planting and proper drainage will enhance the local microclimate, control dust, and prevent erosion. The use of solar energy for water pumping will reduce greenhouse gas emissions and operational costs.

5.2 Negative Environmental Impacts

The potential adverse environmental impacts of the Galdogob Modern Livestock Market project are expected to be moderate, site-specific, and manageable with standard mitigation measures. The following table summarizes the key environmental impacts, their descriptions, and their relevance to applicable World Bank ESSs.

Table 3: Negative Environmental Impacts

Impact Area	Description	Relevance to ESS
Dust and Air Pollution	Site clearance, excavation, and vehicle movement may generate dust and emissions, affecting air quality and nearby residents.	ESS3, ESS1, ESS2
Noise and Vibration	Construction equipment and vehicle operations may cause temporary noise pollution and vibration affecting nearby settlements.	ESS3, ESS4, ESS10
Soil Disturbance and Erosion	Excavation and leveling could cause loss of topsoil and minor erosion, especially during rain or wind.	ESS1
Solid Waste Generation	Construction debris, packaging, and later animal waste may pose environmental and health risks if not managed properly.	ESS3
Liquid Waste and Water Pollution	Wastewater from cleaning, livestock washing, and runoff could contaminate soil and groundwater if unmanaged.	ESS3, ESS4
Water Resource Use	Increased water consumption for construction, livestock, and sanitation could strain municipal water systems.	ESS3
Loss of Vegetation Cover	Clearing sparse shrubs may increase dust and reduce soil stability, though the site has limited biodiversity.	ESS6
Fire and Electrical Hazards	Poor wiring, fuel storage, or overheating machinery could trigger fire risks.	ESS2, ESS4

Occupational Health and Safety Risks	Workers may face risks from machinery, dust, noise, and heat exposure during construction.	ESS2, ESS10
Visual Impacts and Nuisance	Temporary aesthetic disturbance from construction waste and equipment.	ESS1, ESS10
Soil Contamination	Improper disposal of oils, paints, or chemicals may degrade soil quality.	ESS3 , ESS10

5.3 Negative Social Impacts

The main social risks associated with the project relate to labor management, community health and safety, and social inclusion. These risks are moderate and can be effectively mitigated through adherence to World Bank ESSs and local labor laws.

Table 4: Negative Social Impacts

Impact Area	Description	Relevance to ESS
Labor Influx and Social Tension	Presence of non-local workers could strain local services or create conflicts if not well managed.	ESS2, ESS4
Gender-Based Violence (GBV) and Sexual Exploitation and Abuse (SEA)	Potential harassment or misconduct by workers toward community members, particularly women and girls.	ESS2, ESS4 and ESS10
Community Health and Safety Risks	Increased vehicle and machinery movement may pose safety risks to nearby residents and pedestrians.	ESS4
Occupational Accidents and Injuries	Workers may experience accidents due to poor PPE usage or unsafe work practices.	ESS2
Access and Traffic Disruption	Construction activities could temporarily block access routes or cause congestion.	ESS4
Waste Disposal and Sanitation Issues	Improper waste handling during operation could cause odor, vector infestation, and unhygienic conditions.	ESS3 and ESS4
Cultural Sensitivities and Chance Finds	Construction may expose buried cultural or archaeological materials.	ESS8
Vulnerable Group Exclusion	Women, youth, and marginalized groups might be excluded from job or market opportunities.	ESS1 and ESS10
Temporary Business or Livelihood Disruption	Nearby petty traders could experience short-term disturbance during construction.	ESS5

5.4 Overall Impact Significance

Most impacts identified are short-term, localized, and reversible with appropriate mitigation. No significant or irreversible environmental or social damage is anticipated. Implementation of the ESMP including strict adherence to occupational safety, waste management, and community engagement will ensure that the project proceeds sustainably in compliance with both national regulations and World Bank ESSs.

6. ENVIRONMENTAL AND SOCIAL MANAGEMENT PLAN (ESMP)

The Environmental and Social Management Plan (ESMP) provides a structured framework to ensure that identified environmental and social risks are effectively mitigated, monitored, and managed throughout the project lifecycle. It defines the mitigation measures, responsibilities, performance indicators, and monitoring frequencies to guarantee compliance with the Puntland EIA Act (2023) and the World Bank Environmental and Social Standards (ESS1–ESS10).

6.1 Objectives of the Environmental and Social Management Plan (ESMP)

The Environmental and Social Management Plan (ESMP) aims to ensure that all potential environmental and social risks associated with the Galdogob Modern Livestock Market are effectively managed throughout the project life cycle.

The key objectives are to:

1. Integrate environmental and social safeguards into project design, construction, and operation.
2. Identify and mitigate adverse environmental and social impacts while enhancing positive benefits.
3. Define clear institutional roles and responsibilities for ESMP implementation.
4. Ensure compliance with the Puntland EIA Act (2023) and the World Bank Environmental and Social Standards (ESS1–ESS10).
5. Establish monitoring, reporting, and Grievance Mechanisms for accountability and transparency.
6. Promote occupational health, safety, and community well-being through awareness, training, and supervision.

Table 6.1: Environmental and Social Mitigation Plan

Table 5: Environmental and Social Mitigation Plan

Pre-Construction Phase					
Project Phase / Impact (with Relevant ESS)	Mitigation & Enhancement Measures	Responsible Institutions	Monitoring Indicators	Timeframe	Estimated Cost (USD)
Land ownership and site confirmation (ESS1, ESS5)	Verify municipal land certificate and boundaries; obtain written clearance from Galdogob Municipality and MoERCC; ensure no displacement.	MoLAH / Municipality / PCU safeguards team	Approved land certificate; site handover signed.	Before mobilization	300
Design and planning (ESS1, ESS3)	Integrate drainage, waste, OHS and landscaping features into design; include E&S clauses in bid documents.	MoLAH Engineer / FSRP PCU	Drawings with E&S provisions; BoQs reviewed.	Pre-construction	500
Stakeholder engagement and GM setup (ESS10)	Conduct consultations; disclose ESMP summary in Somali; form GM committee with community representation, with a SEA/SH-sensitive channel within it	MoLAH / Municipality / PCU safeguards team	Consultation minutes; GM contacts posted.	Pre-construction	700
Construction Phase					
Dust and air emissions (ESS3, ESS4)	Water spray roads and stockpiles; cover trucks; limit vehicle speed ≤ 20 km/h.	Contractor / PCU safeguards team	Dust visual check; complaint records.	Daily	400
Noise and vibration (ESS3, ESS4)	Restrict noisy works to daytime; maintain equipment; supply ear protection to workers.	Contractor	Noise < 85 dB; PPE used.	Daily	250
Soil disturbance & erosion (ESS1, ESS3)	Proper grading and drainage; stabilize slopes; re-vegetate disturbed areas.	Contractor / PCU safeguards team	Stable slopes; no visible erosion.	Continuous	300

Solid and liquid waste management (ESS3)	Segregate recyclables; provide bins; dispose via municipal system; no burning.	Contractor / Municipality	Waste logs; clean site.	Weekly	600
Occupational health and safety (ESS2)	Provide PPE; daily toolbox talks; safety signage; first-aid kit; keep incident log. Implement heat-stress management (shade, rest breaks, drinking water); maintain PPE replacement records and report/investigate incidents with corrective actions.	Contractor / MoLAH	PPE availability; accident rate = 0.	Daily	800
Fire and electrical safety (ESS2, ESS4)	Install extinguishers; safe fuel storage; routine inspection; fire training.	Contractor / PCU safeguards team	Fire-drill reports; inspection forms.	Monthly	300
Labor influx and GBV/SEA risk (ESS2, ESS4, ESS10)	Prioritize local labor; sign Code of Conduct; conduct GBV awareness for workers. Referral pathway displayed, confidential channel functional, training attendance sheets, SEA/SH cases recorded without personal identifiers and evidence of referral.	Contractor / PCU safeguards team	Signed CoCs; training records.	Quarterly	500
Community health and safety (ESS4)	Fence site; post warning signs; control traffic; maintain access routes.	Contractor / Municipality	Fencing intact; incident register.	Continuous	400
Chance-find procedures (ESS8)	Stop work if artifacts found; notify MoERCC; resume after official clearance.	Contractor / MoERCC	Chance-find report and clearance.	As required	200

Operation Phase					
Solid and liquid waste management (ESS3, ESS4)	Construct manure pits; routine cleaning; compost organic waste; maintain drainage.	Market Management / Municipality	Clean market; waste records.	Continuous	1 200
Water use and sanitation (ESS3)	Install water meters; repair leaks; maintain soak pits; promote efficient use.	Market Management / MoLAH	Water bills; drainage functional.	Monthly	300
Animal health and hygiene (ESS4)	Routine vet checks; quarantine sick animals; daily cleaning schedule.	MoLAH / Market Vet Officer	Vet reports; inspection logs.	Continuous	600
Worker health and safety (ESS2)	Provide PPE; train on hygiene and emergency response.	Market Management / MoLAH	OHS audit records; incident log.	Monthly	400
Gender inclusion (ESS1, ESS10)	Allocate stalls for women vendors; include women in market committees. Create awareness on GBV/SEA-SH reporting channels, Increase number of female representation in decision-making and market management structures.	MoLAH / Municipality	≥ 30 % female representation.	Quarterly	300
GBV/SEA prevention (ESS2, ESS4, ESS10)	Maintain GM; conduct GBV awareness for staff and users; confidential reporting mechanism.	Market Management / MoERCC	GM cases resolved; awareness attendance.	Quarterly	300
Landscaping and aesthetics (ESS6)	Maintain trees and green belts; replace dead plants; control dust through vegetation.	Municipality / Market Management	≥ 80 % plant survival rate.	Continuous	250
Fire and emergency preparedness (ESS2, ESS4)	Keep extinguishers functional; train staff; annual emergency drill.	Market Management / MoLAH	Fire-safety inspection records.	Annual	350

Community relations and GM (ESS10)	Quarterly meetings with traders and elders; active GM records; transparency posters.	MoLAH / Municipality	Meeting minutes; resolved grievances.	Quarterly	250
------------------------------------	--	----------------------	---------------------------------------	-----------	-----

6.2 Capacity Building Plan

Effective implementation of the ESMP depends on the technical capacity and awareness of the key institutions involved in managing environmental and social safeguards. Given that environmental and social management systems in Puntland are still developing, it is essential to strengthen the institutional, technical, and operational capacity of project stakeholders — particularly MoLAH, MoERCC, Galdogob Municipality, and contractors.

The Capacity Building Plan aims to ensure that all parties understand their responsibilities under the ESMP, can monitor environmental and social performance effectively, and can maintain compliance with the World Bank ESSs and national legislation.

Objectives of the Capacity Building Program

- Enhance the understanding of environmental and social safeguards among implementing partners.
- Improve skills in monitoring, reporting, and compliance with the ESMP and World Bank ESSs.
- Promote occupational health and safety (OHS) practices and community engagement.
- Strengthen GBV/SEA prevention and Grievance Mechanisms.
- Foster coordination between government institutions, contractors, and local communities.

Table 6: Capacity Building and Training Plan

Training Topic / Focus Area	Target Participants	Objectives and Key Content	Responsible Institutions	Frequency / Timing	Estimated Cost (USD)
1. ESMP Implementation and Compliance	MoLAH staff, Municipality engineers, Contractor representatives	Understanding ESMP components, ESS requirements, roles/responsibilities, and reporting procedures.	PCU safeguards team / FSRP PCU / MoERCC	Pre-construction and annually	1,000
2. Occupational Health and Safety (OHS)	Construction workers, supervisors, MoLAH field staff	Safe work procedures, PPE use, first aid, emergency preparedness, and hazard reporting.	Contractor / MoLAH / PCU safeguards team	Quarterly during construction	800
3. Environmental Monitoring and Reporting	MoERCC inspectors, MoLAH engineers, Municipality officers	Monitoring indicators, data collection tools, inspection checklists, and report preparation.	MoERCC / PCU safeguards team	Biannually	700
4. Community Health, Safety, and Waste Management	Market management staff, traders, cleaners	Hygiene, waste segregation, sanitation practices, water use efficiency, and animal waste handling.	MoLAH / Municipality	During early operation and refresher annually	600
5. Gender, GBV/SEA Prevention, and GM	All contractors, community representatives, women and youth leaders	Code of Conduct, awareness on GBV/SEA, survivor-centered referral pathways, and GM operation.	PCU safeguards team / MoERCC / KAALO	Pre-construction and semi-annually	800
6. Stakeholder Engagement and Communication	MoLAH staff, Municipality, Market Committee	Effective communication, participation tools, and feedback documentation.	MoLAH / PCU safeguards team	Annual refresher	600

6.3 ESMP Implementation Budget

The implementation of the Environmental and Social Management Plan (ESMP) for the Modern Livestock Market in Galdogob requires adequate financial resources to ensure effective mitigation, monitoring, and reporting of environmental and social measures. The budget provides for actions that promote compliance with the Puntland EIA Act (2023) and the World Bank Environmental and Social Standards (ESSs) while supporting occupational health, safety, and community well-being.

The ESMP budget covers three key cost categories:

1. Mitigation Measures – covering dust control, waste management, erosion prevention, fencing, OHS materials, and GBV/SEA awareness activities.
2. Capacity Building and Training – for MoLAH, MoERCC, contractors, and market management staff on ESMP implementation and compliance.
3. Monitoring and Supervision – including site inspections, environmental audits, and safeguard reporting by PCU safeguards team Co., MoLAH, and MoERCC.

The total estimated cost for ESMP implementation is USD 18,500, distributed as follows:

- Mitigation measures: USD 9,000
- Capacity building and training: USD 4,500
- Monitoring and supervision: USD 5,000

The ESMP budget will be integrated into the overall FSRP project financing and managed jointly by MoLAH, the PCU, and PCU safeguards team. Quarterly budget reports and site verifications will ensure transparency and accountability.

This allocation ensures that the project’s environmental and social safeguards are implemented effectively, supporting safe, sustainable, and inclusive market development in Galdogob.

Sustainability of ESMP monitoring after project completion will be ensured by integrating environmental and social monitoring into the routine operations of the respective facility under the responsible line ministry, with continued regulatory oversight by the Ministry of Environment, Range and Climate Change and coordination with the District Administration. Monitoring responsibilities and costs will be absorbed into regular operational budgets, staff roles, and service delivery functions, ensuring continued compliance beyond FSRP closure.

6.4 Implementation Arrangements

The effective implementation of the Environmental and Social Management Plan (ESMP) for the Modern Livestock Market in Galdogob requires coordinated action among multiple institutions at national, regional, and local levels. Clearly defined roles and responsibilities are essential to ensure that environmental and social safeguards are integrated into every phase of the project—from planning and construction to operation and maintenance.

The overall responsibility for ESMP implementation lies with the Ministry of Livestock and Animal Husbandry (MoLAH), supported by the Somalia Food Systems Resilience Project (FSRP) Project Coordination Unit (PCU) and PCU safeguards team, which serves as the safeguards supervision and advisory firm.

Key Institutional Roles and Responsibilities

1. Ministry of Livestock and Animal Husbandry (MoLAH)

- Acts as the *project owner* and ensures overall coordination and implementation of the ESMP.
- Integrates environmental and social requirements into tender and contract documents.
- Supervises contractors' compliance with mitigation and monitoring measures.
- Reports on ESMP progress to the FSRP PCU and the World Bank.

2. Ministry of Environment, Range and Climate Change (MoERCC)

- Provides regulatory oversight and technical review in accordance with the **Puntland Environmental Impact Assessment Act (2023)**.
- Conducts periodic environmental inspections and audits.
- Offers technical advice on mitigation measures and environmental performance.

3. Puntland Ministry of Commerce, Industry and Investment (MoCII) – Market Regulation & Trade Facilitation: MoCII will support the operationalization of the livestock market through:

- alignment with Puntland market/trade regulations and licensing requirements;
- support to transparent trading practices and dispute prevention related to commerce;
- coordination with MoLAH and Municipality on market governance where relevant.

4. FSRP Project Coordination Unit (PCU)

- Oversees safeguard compliance across all project components.
- Provides technical backstopping, consolidates quarterly and semi-annual ESMP reports, and submits them to the World Bank through the NPCU.
- Ensures timely allocation of funds for ESMP implementation and monitoring activities.
- Provides technical supervision and environmental and social safeguard advisory services.
- Conducts regular site visits to monitor ESMP compliance and prepares monthly safeguard reports.
- Facilitates capacity-building and GBV/SEA awareness sessions.
- Supports the GM process and ensures documentation of grievances and responses.

5. Galdogob Municipality

- Supports community mobilization, stakeholder consultations, and enforcement of local environmental regulations.
- Facilitates waste management, sanitation, and site cleanliness during construction and operation.
- Ensures local labor participation and coordination with market management committees.

6. Contractor

- Implements site-specific mitigation and safety measures as outlined in the C-ESMP.
- Appoints an on-site **Environmental, Health, and Safety (EHS) Officer** responsible for daily monitoring.
- Maintains incident records, ensures PPE provision, and participates in regular supervision meetings.

7. Market Management Committee (Operation Phase)

- Ensures ongoing waste management, sanitation, and occupational safety within the market.

- Manages community relations, GM records, and coordination with MoLAH and the municipality.
- Conducts routine inspections and reports environmental or social concerns for follow-up.

6.5 Grievance Mechanism (GM)

A project-level Grievance Mechanism (GM) has been established to ensure that workers, community members, and other stakeholders can easily, safely, and transparently raise concerns related to the construction and operation of the Galdogob Modern Livestock Market. The GM complies with World Bank ESS10, ESS2, and ESS4 and is fully integrated with the national FSRP toll-free hotline 3060.

To enhance safe reporting of GBV/SEA/SH incidents, the GM will include a dedicated and confidential reporting channel, complemented by female-only awareness and sensitization sessions to encourage disclosure, trust, and access to survivor-centered support services. These measures will be implemented in coordination with trained female focal points and qualified GBV service providers, ensuring confidentiality, informed consent, protection from retaliation, and culturally appropriate engagement throughout the reporting and response process.

The mechanism provides multiple reporting channels, including complaint boxes, written submissions, direct reporting to project staff, the contractor's worker GM, community focal points, and the FSRP hotline. Grievances may relate to environmental impacts, construction disturbances, labor issues, GBV/SEA/SH, safety concerns, or market operations.

SEA/SH-related grievances will be handled through confidential, survivor-centered GM procedures that do not require written evidence and do not involve mediation with alleged perpetrators. Such cases will be managed with strict confidentiality and survivor consent, and survivors will be offered voluntary referral to qualified GBV service providers for appropriate health, psychosocial, legal, or protection support, with protection from retaliation ensured at all time.

All complaints will be registered, acknowledged within 48 hours, assessed, investigated, and resolved within established timelines — typically between 7 to 14 days, depending on the nature and severity of the issue.

This mechanism ensures accountability, promotes transparency, and strengthens trust between project implementers and the affected communities throughout the project life cycle.

7. Summary of Public Consultation and Participation

Public consultation and stakeholder participation are central to the preparation and implementation of this Environmental and Social Management Plan (ESMP). Meaningful engagement ensures that the views, needs, and concerns of affected communities and key stakeholders are reflected in project design, risk management, and decision-making.

For the Galdogob Modern Livestock Market, consultations were conducted in accordance with World Bank ESS10 – Stakeholder Engagement and Information Disclosure and the principles of transparency, inclusivity, and participation. The process involved meetings, focus group discussions, and interviews with local government officials, community elders, livestock traders, women’s representatives, and youth groups.

7.1 Objectives of the Consultation

The main objectives of the consultation process were to:

- Inform stakeholders about the project objectives, design, and potential environmental and social impacts.
- Gather feedback on community priorities, land ownership, and potential livelihood benefits.
- Identify perceived risks and mitigation preferences related to construction, waste management, and market operations.
- Strengthen collaboration and ensure local ownership and support for project implementation.
- Ensure communities are fully informed about the Grievance Mechanism (GM), including the toll-free hotline and available reporting channels, and to promote timely and transparent submission of concerns or complaints throughout project implementation.

7.2 Summary of Consultation Process

Consultations were held in Galdogob District with representatives from the Ministry of Livestock and Animal Husbandry (MoLAH), Galdogob Municipality, community elders, livestock traders, women’s groups, and youth organizations.

- Participants welcomed the project as a key intervention for improving livestock trade, hygiene, and income opportunities.
- Community leaders confirmed that the land allocated for the market is public land, with no private claims or displacement impacts.

- Key environmental concerns raised included dust, noise, and waste management during construction.
- Social concerns focused on ensuring local employment, women’s inclusion, and fair stall allocation during market operation.
- Participants emphasized the need for clean water supply, security fencing, and waste disposal systems to ensure market sustainability.
- The community expressed support for continued engagement and proposed establishing a Market Management Committee after completion.

7.3. Stakeholders consulted

Table 7: Stakeholders consulted

Stakeholder	Representation	Issues Discussed / Key Feedback
MoLAH	District Officers	Endorsed project design; recommended compliance with ESMP and inclusion of OHS measures.
Galdogob Municipality	Mayor and technical staff	Confirmed land ownership; committed to support waste management and enforcement of bylaws.
Community Elders	Village leaders and traditional authorities	Supported project; requested local job opportunities and dust control during construction.
Women Representatives	Local women traders and association leaders	Highlighted inclusion of women in management committees and access to stalls.
Youth Groups	Local youth association members	Requested youth employment and involvement in market maintenance.
Livestock Traders and Market Users	Traders, brokers, and transporters	Stressed need for veterinary inspection, hygiene, and fair market operations.
General community (within the catchment)	Residents (pastoral and agro-pastoral households), nearby villages, and service users in the market catchment area.	Welcomed the project; requested strong hygiene and waste management, reliable water supply, traffic/animal movement safety (especially on market days), fair user fees and transparent management, and a functional grievance mechanism; emphasized dust/noise control during construction and protection of nearby households from nuisance and pollution.

7.4 Consultation Outcomes

Consultations for the Galdogob Modern Livestock Market confirmed strong community support for the project and provided valuable inputs to improve its environmental and social performance.

Key outcomes include:

- **Broad Support:** Stakeholders welcomed the project as a major investment for local economic growth and improved livestock trade. The site was confirmed as public land with no ownership disputes.
- **Environmental Concerns:** Participants emphasized the need for dust control, waste management, tree planting, and regular environmental monitoring.
- **Social Priorities:** Communities requested local labor hiring, inclusion of women and youth in employment and market management, and improved sanitation and water facilities.
- **Infrastructure Needs:** Stakeholders stressed the importance of a veterinary unit, holding pens, and secure fencing to ensure hygiene and safety.
- **Governance and Grievance Handling:** Participants supported forming a Market Management Committee and welcomed the FSRP toll-free hotline (3060) for grievance reporting.

In general, the consultations reflected strong ownership, constructive feedback, and clear community expectations that have been incorporated into the ESMP.

7.5 Stakeholder Engagement Recommendations

- Maintain continuous stakeholder consultations throughout the construction and operational phases, including quarterly meetings and regular information disclosure sessions.
- Establish a Market Management Committee to act as the primary community liaison body for feedback, monitoring, and grievance resolution.
- The project PCU, in coordination with MoLAH and Galdogob Municipality, should ensure that all future engagement activities are properly documented, gender-inclusive, and accessible to vulnerable and marginalized groups.

8. Conclusion

The Environmental and Social Management Plan (ESMP) for the **Modern Livestock Market in Galdogob** provides a comprehensive framework for managing environmental and social risks associated with the project's construction and operation. It ensures that all activities are carried out in full compliance with the Puntland Environmental Impact Assessment Act (2023) and the World Bank Environmental and Social Standards (ESS1–ESS10).

The assessment identified potential impacts including dust emissions, waste generation, occupational health and safety risks, and community concerns all of which are site-specific, moderate, and manageable through the mitigation measures outlined in this ESMP. The plan also emphasizes positive outcomes such as improved livestock trade efficiency, enhanced hygiene standards, local employment, and gender inclusion.

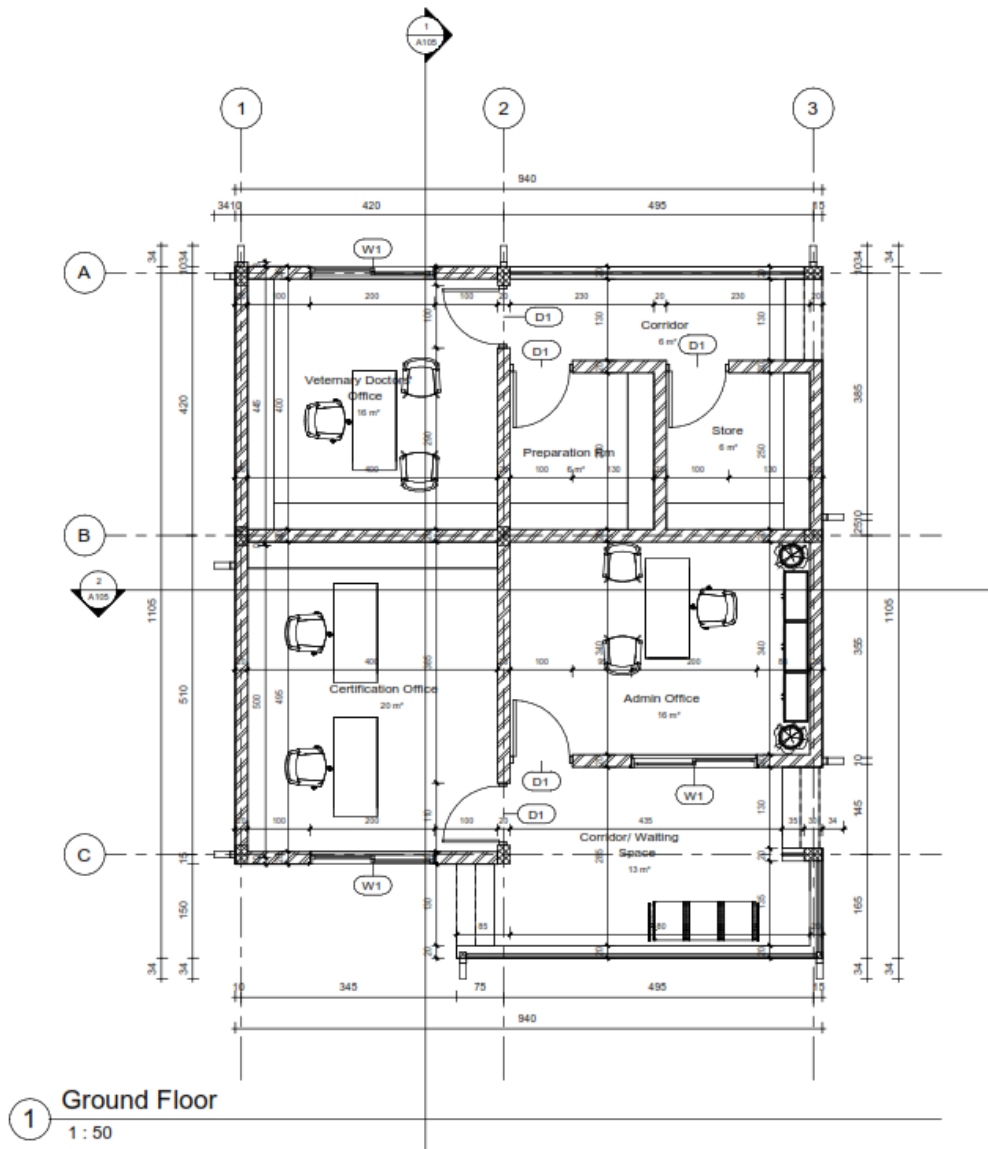
Successful implementation of this ESMP will depend on strong collaboration among the Ministry of Livestock and Animal Husbandry (MoLAH), Ministry of Environment, Climate Change and Wildlife (MoERCC), Galdogob Municipality, and the FSRP Project Coordination Unit (PCU). Each institution has a defined role in mitigation, monitoring, reporting, and community engagement.

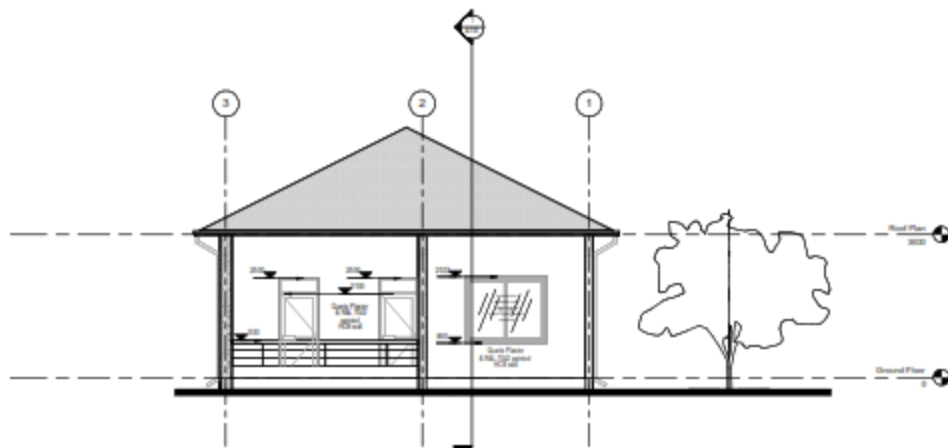
Continuous capacity building, effective monitoring, and an accessible Grievance Mechanism (GM) linked to the national FSRP hotline (3060) will further strengthen environmental and social performance and ensure accountability.

In conclusion, with proper adherence to this ESMP, the Galdogob Modern Livestock Market will be implemented in an environmentally sustainable, socially inclusive, and economically beneficial manner, contributing significantly to the resilience and growth of Puntland's livestock sector.

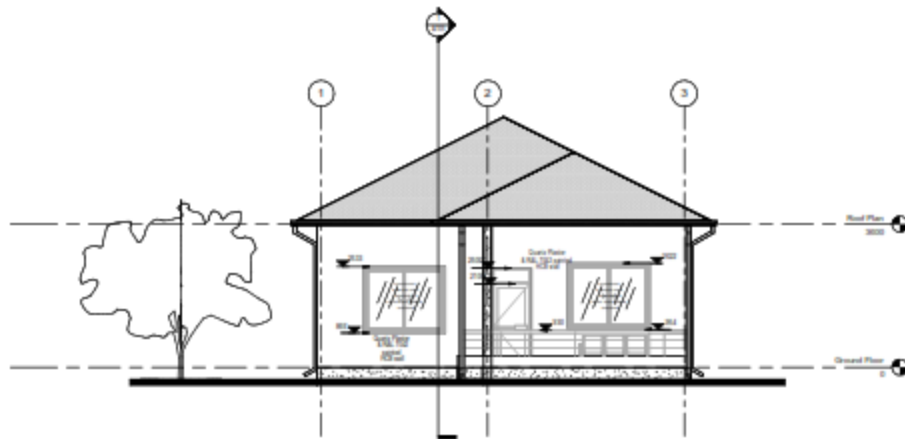
9. Annexes

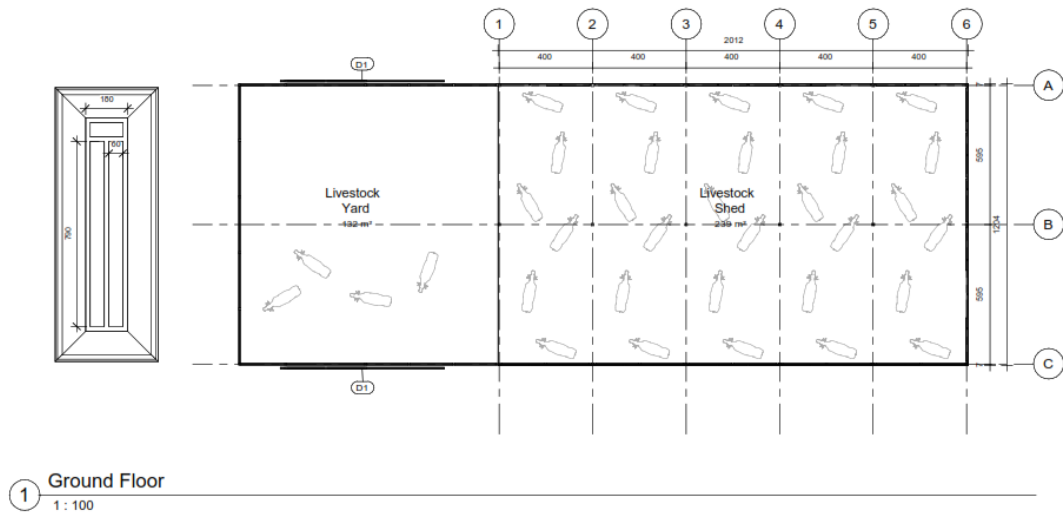
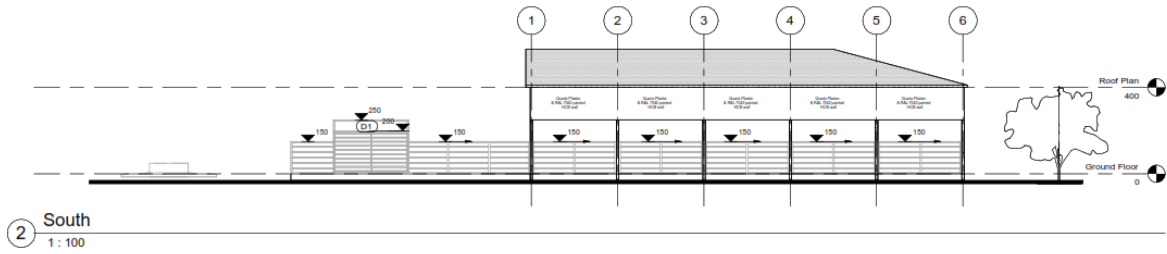
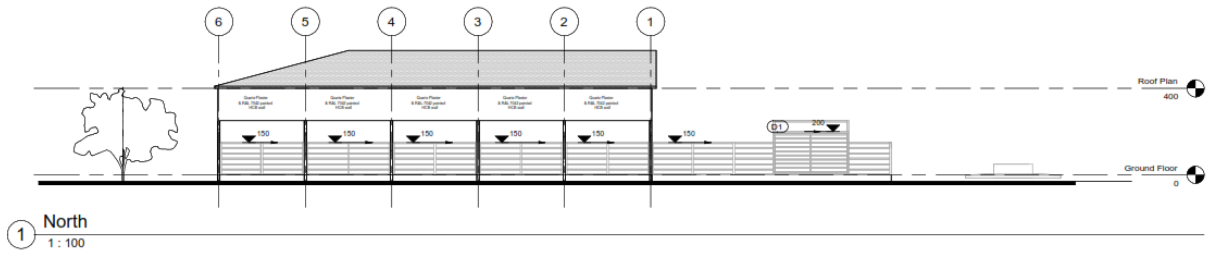
9.1. Designs/ Layout Drawings





1 North
1:50





9.2. Land ownership documents



DAWLADDA HOOSE EE GALDOGOB
GALDOGOB LOCAL GOVERNMENT
SHAHAADADA DHULKA - SABARLOOGO
LAND CERTIFICATE



Xogta Aasaasiga [Basic Information]

Lambarka Dhulka [Land No.]	Magaca Mulkiilaha [Owner Name]	Lambarka Shahaadada [Certificate Number]
620	XARUNTA XANAANADA XOOLAHA EE DEG. GALDOGOB	GD-1

Tilmaamaha Dhulka [Plot Details]

Isticmaalka [Usage]	Ballac [Width]	Dherar [Length]	Isu-gayn [Total]
Public	150M	100M	15000M

Meesha uu ku yaalo Dhulka [Plot Location]

Degmada [District]	MAGAALADA [Sub-District]	Waaxda [Section]	Waddada [Street]	Ku Dhaw [Near By]
GALDOGOB	HAWL-WADAAG	1aad	WADADA LAANTA HAWADA	AAGA GURIGA GUURTIDA

Jihooyinka [Directions]

Waqooyi [North]	Bari [East]	Koonfur [South]	Galbeed [West]
GURIGA GUURTIDA	DAB DAMISKA	WADDO	WADDO

Latitude: 7.03513288497925, **Longitude:** 47.01823425292969.

Dawladda Hoose ee Degmada GALDOGOB waxay caddaynaysaa in sida sharciga waafaqsan ay ku bixisay Booska/Dhulka tilmaamihisu sare ku xusan yihiin ayna siisay Muwaadinka kor ku xusan.



Sugaal Cismaan Faarax
A. Hawlaha Guud



Saa'id Mohamud Mohamed
Xoghaye (General Secretary)



Hassan Farah Mohamed - Ayaxte
Gudoomiye (Mayor)

Printed By: MOHAMED ABDIRIZAK

9.3. Stakeholder Consultation meetings' participant lists



Community/Stakeholder Engagement Meetings

Attendance Sheet

Location: Galdogob

Date: 30/10/2025

No	Name	Gander	Title	Contact Number	Signature
1	Ali Fisse Ali	male	Elder Community	[REDACTED]	[Signature]
2	Abdulleh: mohamed Hagi	male	Elder Community	[REDACTED]	[Signature]
3	yussuf Said Fi.Pi	male	Elder Community	[REDACTED]	[Signature]
4	Abdirazak Goox Gommara	male	elder	[REDACTED]	[Signature]
5	Cawale waraana Hirz	male	elder	[REDACTED]	[Signature]
6	mohamed Hassan jamaal	male	elder	[REDACTED]	[Signature]
7	ward. Ahmed nuur	Female	G. wadajir	[REDACTED]	[Signature]
8	Sahro Khalif Fi.Pi	Female	G. Hoolwaday	[REDACTED]	[Signature]
9	Deeqo Haski nu nuur	Female	G. wabari	[REDACTED]	[Signature]
10	Hawa Said Kayle	Female	wadajir	[REDACTED]	[Signature]
11	Diyaa mohamed Hassan	male	D. Council	[REDACTED]	[Signature]
12	Xawa nuur Po:ice	Female	Business meet	[REDACTED]	[Signature]
13	Sahro Rowdo Abdulleh	Female	Business	[REDACTED]	[Signature]
14	Hawa mohamed Ali	Female	Her food	[REDACTED]	[Signature]
15	Maryam mohamed yussuf	Female	Her food	[REDACTED]	[Signature]

9.4 ES Screening Checklist



ES Screening Form -
Galdogob.docx

9.5. Photos for Consultation Meetings





Meeting with Galdogob Municipality





Meeting with community representatives

9.6. Site Observation Photos



Site photos